

SOURCING GUIDE

ROSCOMMON

DESIGN | CRAFT | VISUAL ART



where your heart is

Roscommon
Oifig Fiontair Áitiúil
Local Enterprise Office



introduction

Instigated by Local Enterprise Office Roscommon, our Roscommon Design | Craft | Visual Art Sourcing Guide celebrates and promotes excellence and innovation in contemporary craft, design and art in our county.

The theme of our Sourcing Guide is **Where the Heart Is**. The Sourcing Guide celebrates the creative talent of Co. Roscommon. This is our collective call to support each other and to support our talented makers, creators and artists living and working in Co. Roscommon.

Roscommon is marketed as the Land of Memories. Investment in an original piece of design, craft or visual art made in Roscommon can bring us closer together. Those who are far from home can still connect through new digital sales channels that have been embraced by many in the craft, design and visual art communities. Our products are ideal corporate gifts and many designers and artists also welcome commissions.



DESIGN | CRAFT



page

04	Basket Case Tomas
05	Black Hen Designs
06	Carol Kelly Artwork
07	Cate Devitt
08	Celtic Shoes
09	Derrycashel Crafts
10	Elaine Garvey Ceramics
11	Felt Fairies
12	Frances Crowe Tapestry Artist
13	Geraldine Beirne Textile Artist
14	Hazelrocks Jewellery
15	Lydia Clayton Goldsmith
16	Maker Magpie
17	Michelle Made This
18	Naomh Padriag Handcrafts
19	Nugent Luxury Knitwear
20	Ogham Wishes
21	Rita Oates Artist
22	Ros Clay Pottery Studio
23	Seams Sew Simple
24	Smyth Knives
25	Steeple View Crafts
26	Úna Burke



VISUAL ART

page

28	Anne Rigney Art
	Ellen Susan Igoe Art
29	Graeme Singleton
	Joe Caslin
30	Kate Oram
	Lorna Brennan
31	Malachy Costello
	Matthew Gammon
32	Norma Fitzgerald
	Siobhan Cox-Carlos
33	Susan Mannion
	Vera Gaffney



Basket Case Tomas

Tomas takes inspiration from the transformation of natural willow into strong and durable willow baskets using traditional basket making methods. His forms capture and preserve the innate qualities of willow, its strength, beauty and resilience, with a commitment to traditional craftsmanship every basket is unique.



We would love to hear from you...



Doon, Boyle, Co. Roscommon F52 X266



+353 (0)87 237 9632



browne.tomas@gmail.com



www.facebook.com/basketcasetomas

Black Hen Designs

Welcome to the wonderful world of Black Hen, where nature comes alive and every picture tells a story. Established in 2010, Andrew and Vida Pain design and create a beautiful range of quirky illustrations, inspired by nature and all things rural, and brought to life through the use of vivid colour and exaggerated form.

The ideas for many of the drawings can often come from chance encounters and as there is usually a story behind each one, a playful and uplifting title is given to these quirky contemporary designs.



Rise and Shine






AP



Happy feet

AP

We would love to hear from you...

-  Feigh, Lisacul, Ballaghaderreen, Co. Roscommon, F45 FX60
-  +353 (0)94 988 0592
-  blackhendesigns@gmail.com
-  www.blackhendesigns.com
-  www.facebook.com/blackhendesigns
-  www.instagram.com/blackhendesigns



Carol Kelly Artwork



Carol Kelly creates a variety of Enamelled Glass Art especially personalised bespoke gift pieces. Carol's work is of a contemporary nature and consists primarily of Handcrafted Enamel Gifts such as wall art / jewellery and large abstract acrylic paintings. Each piece is unique, and no two pieces are ever the same. Enamelling is a rare and ancient craft dating back to the 13th century BC. The craft has gradually faded out over the years making the artwork exceedingly rare. Enamel can be made up of either powdered or liquid glass that is fired onto metal. Carol prefers to use recycled copper cylinders.

The glass is fired in an enamelling kiln at 800 degrees celsius. In the making of each piece there are several complex processes that must be carried out. Great care must be taken with each process. These techniques take years of practice to master not forgetting the vast knowledge of each type of enamel. Carol is always trying to develop, explore and push her work to be its best.

We would love to hear from you...

-  Clonfad, Old town, Athlone, Co. Roscommon, N37 YD60
-  +353 (0)87 904 1904
-  carolkellyprintmaker@gmail.com
-  carolkellyartwork.ie
-  www.facebook.com/carolkellyartwork
-  www.instagram.com/carolkellyartwork



Cate Devitt



CATE DEVITT
handcrafted gifts

New to market, these beautiful homewares are designed and hand made by local designer and artist Cate Devitt.

Each piece is unique and crafted from Jesmonite with a blend of other materials including local wood inlay, gold leaf, marbling and glass. Each one is sealed with small transparent feet to protect surfaces. Products are heat resistant and make perfect decorative and practical gifts.

Pieces available include coasters, candle plates, trays, jewellery trays, teapot stands, pen pots, candle holders, bowls and decorative pots.

We would love to hear from you...



+ 353 (0) 85 261 6584



catedevitt@outlook.com

Celtic Shoes








Self-taught shoe and boot maker Con Connor creates modern wearable versions of a forgotten Irish style of footwear. Many years ago Con and his son got involved in medieval re-enactment, dressing in period costume and playing with swords, spears and archery, etc. Replicas made of one of the two late Bronze Age shoes found in Roscommon are on display in the Heritage Centre in Cruachan Aí, the O'Connor clan museum in Clonalis House, Castlerea and in the Roscommon County Museum itself. Celtic Shoes exclusive ranges are inspired by Irish heritage, choose from Dublin's 'Brian Boru Boots' and The 'Lough Gara' Gaelic Shoe.

What about Roscommon inspires your work?

Celtic Shoes take inspiration from the rich cultural heritage in the landscape, the abundance of stories, built heritage and artifacts found in the county ranging from fantastic gold collars, gold crosses and the late Bronze Age shoes found in Lough Gara.

We would love to hear from you...

-  Trien, Castlerea, Co. Roscommon, F45 HK53
-  +353 (0)94 964 0668
-  consmls@gmail.com
-  www.celticshoes.ie
-  www.facebook.com/CelticShoes

Derrycashel Crafts



Derrycashel Crafts exquisitely designed clocks, symbolic of Irish culture are handcrafted by Thomas Noone from solid timbers at Derrycashel, and are fitted with a Quartz Movement. Our designs include the map of Ireland, Claddagh, Shamrock, Celtic Cross, St Brigid's Cross, Harp, Violin, Guitar, Banjo and all county shapes.

Various Irish timbers are used including oak, beech, elm, pine, ash and others. Their crafts are an ideal gift for weddings, birthdays, anniversaries, farewells, etc.

What about Roscommon inspires your work?

Maura and Thomas Noone are the creators of Derrycashel Crafts. Roscommon born, they take inspiration from Ireland's great pride in county heritage and create a range of wooden clocks, crafted in the shape of each county. Derrycashel Crafts are sought-after personal and corporate gifts and take pride of place in homes and offices across the globe. This busy couple, now grandparents, love working with individual commissions and retail outlets to share these unique and timeless gifts.



We would love to hear from you...

-  Derrycashel, Corrigenroe, Boyle, Co. Roscommon F52 H684
-  +353 (0)71 96 47051
-  derrycashelcrafts@eircom.net
-  www.woodenclocksroscommon.ie
-  www.facebook.com/DerrycashelCrafts

Elaine Garvey Ceramics

Elaine makes a range of handmade ceramics, most of which are made on the potters wheel. She is drawn to the tactile qualities of clay and its process into a permanent object.

What about Roscommon inspires your work?

Her work is inspired by the landscape of Roscommon, as a county rich with scenic lakes, in particular her hometown of Ballinlough and where she now lives in Loughglynn. This landscape has influenced her colour palette and enables her to create the gentle blue and green earthy tones which she uses.



We would love to hear from you...

- +353 (0)86 356 3114
- elainegarveyceramics@gmail.com
- www.facebook.com/elainegarveyceramics
- www.instagram.com/elainegarveyceramics
- www.etsy.com/shop/ElaineGarveyCeramics



Felt Fairies



Franziska Lienberger is a wet felting artist inspired by Irish mythology. She is well known for her fairy collections and wall hangings. Franziska facilitates regular felting courses in her studio and online. Felt Fairies use fine merino wool for their craft. Felt is created by using warm soapy water and friction. Each piece is hand stitched. Franziska lives in Dooneen which translates to hill of fairies.

What about Roscommon inspires your work?

Franziska draws inspirations from the surroundings of the bog and fields, the wildlife and fauna, and of course, the fairies that visit. She loves walking and always finds beautiful spots in Roscommon to draw inspiration from e.g. old ruined cottages to wild flowers.

We would love to hear from you...



Dooneen, Ballinameen, Boyle, Co. Roscommon, F52 TN53



+353 (0)86 382 5965



ask@franziska.ie



www.franziska.ie



www.facebook.com/franziskafeltart



www.instagram.com/franziska_feltart



Frances Crowe Tapestry Artist



Frances is a tapestry weaver. She designs and handweaves fine art large scale tapestries and framed miniatures. She takes commissions and makes work for exhibitions. Her inspiration comes from world events and how they affect her. The narrative in the work is often political, and evokes a strong emotional response from the viewer. Frances works from her own studio in rural isolation. Her online shop sells signed, limited edition, framed and unframed, prints of Frances most recent works.

What about Roscommon inspires your work?

Living in the quiet rural landscape of Roscommon Frances can sit and think, draw, walk, garden and make. She is inspired by the people, the stories, the community, the support, the friendships, and her own home, created with love over 35 years is still a work in progress.

We would love to hear from you...

-  Grange, Four Mile House, Co. Roscommon, F42 XK37
-  +353 (0)87 776 0250
-  francescrowe3@gmail.com
-  www.francescrowe.com
-  www.facebook.com/fcrowetapestry
-  www.instagram.com/crowefrances





Geraldine Beirne Textile Artist

Geraldine is a Textile Artist who takes a contemporary twist on the traditional handcrafts to create her art work. By using fabrics, threads and fibres she encapsulates the rich diversity of the rural landscape and brings it to life with colour and texture through contemporary embroidery, fabric manipulation and felting to create a variety of bespoke wall art and sculptural pieces.

What about Roscommon inspires your work?

Geraldine's design inspiration comes from her love of gardening, the beautiful and varied landscape of Roscommon from its lush green fields, bogs, forests, rolling hills, many lakes & rivers, its seasonal beauty of amazing colours, variety of flora and fauna, its rich history of tradition and folklore all influence her work.

We would love to hear from you...

-  Ballysundriven, Elphin, Co Roscommon, F45 WY62
-  +353 (0)86 089 0077
-  geraldinebeirnetextileart@gmail.com
-  www.geraldinembeirne.wordpress.com
-  www.facebook.com/GeraldineBeirneTextileArtist
-  www.instagram.com/geraldinebeirnetextileartist



Hazelrocks Jewellery

Jewellery to bring joy to your day. Inspired by our Celtic heritage and landscape. Tracy McTernan creates jewellery using ethically mined/sourced genuine gemstones from around the world - curls and swirls of wire, to create unique pendants. She makes gemstone Wishing Bracelet Cards - a card and gift in one - give the gift of an Irish wish. Angels, tree of life pendants and mini wire and gemstone Tree of Life sculptures and discovered baby dragons, all unusual and handmade gift ideas.

What about Roscommon inspires your work?

From her studio in rural Co. Roscommon, surrounded by quiet natural beauty, she is inspired by the changing colours of the landscape, and by her Celtic heritage and stories, the little hills and weaving lanes, the colours of the changing seasons and the wonderful light.

We would love to hear from you...



Cuilbalkeen, Keadue, Boyle, Co. Roscommon, F52 Y884



+353 (0)86 871 8176



sales@hazelrocksjewellery.ie



www.hazelrocksjewellery.ie



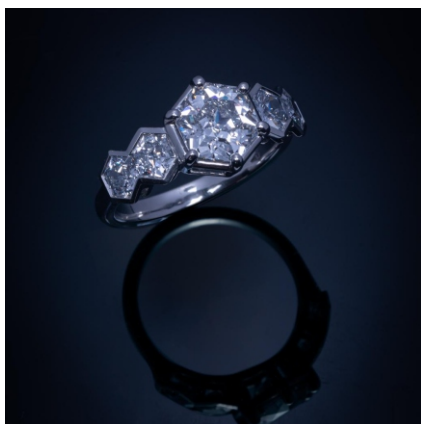
www.facebook.com/Hazelrocksjewellery



www.instagram.com/Hazelrocksjewellery



Lydia Clayton Goldsmith



As a jewellery designer and goldsmith, Lydia's main aim has always been to create pieces of wearable art, that combine traditional handcrafted skills and a high quality finish. She takes her inspiration from timeless movements, such as Streamline Design, Art Deco, and Architecture.

Lydia makes a range of originally designed engagement rings and she also re-imagines the design of old gold and platinum jewellery.

We would love to hear from you...

📞 +353 (0)86 222 5327

✉ lydiaclaytongoldsmith@gmail.com

🌐 https://www.instagram.com/lydiaclaytonjewellery_lcj/



Maker Magpie

Maker Magpie HQ is situated in a rainy corner in the very north end of County Roscommon. Caroline Walshe is chief maker and chief magpie here at Maker Magpie - artist, designer, puppeteer, performer, curator, taxidermist, sheep keeper and general mastermind behind the whole operation. Taking inspiration from the amazing countryside around her and the woods her studio looks right out into. She designs environmentally friendly craft kits and knitting and sewing patterns.

Twenty years ago Caroline learned to make felt and never looked back. Now with shelves in her studio overflowing with wool, fabric, collected random weirdness and the odd bit of dodgy home taxidermy, she attempts to use natural and biodegradable materials in her business, locally sourced where possible.

We would love to hear from you...

- ✉ makermagpie@gmail.com
- 🌐 www.makermagpie.com
- 📷 www.instagram.com/makermagpie
- 🛒 www.etsy.com/shop/makermagpie

Michelle Made This

Michelle is a compulsive homemaker and DIYer with a strong emphasis on mindful making. Everything she does centres around “home” which for her, isn’t just a place but a feeling. She loves to make simple things beautiful and beautiful things simple and generously shares her DIY, through her social media and workshops from her cottage. Michelle has a wealth of experience in all areas of craft having studied in disciplines such as ceramics, jewellery making, dress design, sculpture and bag making attending Central Saint Martin’s College in London, the Students Art League in New York and Grafton Academy of Dress Design in Dublin. Michelle’s tutorials and business have featured on RTE’s Afternoon Show, Nationwide and Eco Eye and she was recently hired as Creative Consultant for RTE’s Crafty Christmas.

What about Roscommon inspires your work?

Roscommon is a hidden gem for creatives. There’s beauty and inspiration around every corner, lakes, forests, green fields, clear skies and an abundance of wildlife. For her, it’s the most idyllic place to create in a mindful way. Michelle’s cottage is nestled in rural Roscommon surrounded by bogland. From sunrises to sunsets, birdsong and foraged greenery, it’s an endless source of inspiration to her and her homemaking.

We would love to hear from you...

- 📍 Teach Bán, Corbo, Kilrooskey, Co. Roscommon, F42 RR58
- 📞 +353 (0)85 111 1984
- ✉️ michellemadethis@gmail.com
- 🌐 www.michellemadethis.com
- 📘 www.facebook.com/michellemadethis
- 📷 www.instagram.com/michellemadethis





Naomh Padraig Handcrafts

Patricia O’Flaherty, Naomh Padraig Handcrafts, is in business over 20 years and specialises in the traditional craft of basket making from both rush and willow, Naomh Padraig is a registered member of the Design and Crafts Council of Ireland.

Naomh Padraig, translated from the Irish language, means St. Patrick. Patricia is also a qualified craft teacher and trainer and teaches her skills to the wider public through her craft studio. Naomh Padraig also sells its products to craft shops and galleries in Ireland, Europe, Australia, New Zealand, Japan and the USA.

What about Roscommon inspires your work?

Patricia’s homeplace and the beauty of the countryside, lakes, hills and ruggedness, is an inspiration for her work.

We would love to hear from you...

-  Cloonshee, Strokestown, Co. Roscommon, F42 WT22
-  +353 (0)71 963 7077
-  info@naomhpadraighandcrafts.com
-  www.naomhpadraighandcrafts.com



Nugent Luxury Knitwear

FIONA NUGENT is the founder of Nugent Luxury Knitwear, an up and coming accessories label focused on textile and texture. Fiona aims to create pieces that feel luxurious and comforting, even as the designs remain bold and modern. The brand looks at the crisp architecture of contemporary Ireland and develops beautiful accessories that combine contemporary Irish design with traditional handcraft techniques.

Fiona picked up her love of knitting from her mother and grandmother in their Roscommon Town wool shop, a passion and craft passed down through generations. Her lifelong appreciation for textiles, knitting, and creating led her to pursue fashion and design in college, firstly studying a BA in fashion design. After working in industry for several years, Fiona went on to specialise in knitwear, completing her MA in Fashion Knitwear Design. Fiona is committed to sustainability and creating pieces that will become lasting investment pieces, avoiding fast fashion trends in favour of timeless quality.

We would love to hear from you...



+353 (0)83 883 6272



www.facebook.com/nugentluxuryknitwear



www.instagram.com/nugentluxuryknitwear



Ogham Wishes

We would love to hear from you...

-  Knockcroghery, Co. Roscommon, F42 TH60
-  +353 (0)90 666 1923
-  kellyethel@gmail.com
-  www.oghamwish.com www.bogbuddies.com
-  www.facebook.com/OghamWishes
-  www.instagram.com/oghamwish

Ethel Kelly's award-winning range of hand-painted Ogham Wishes continue to enchant and delight. At her traditional workshop in Knockcroghery village, each Ogham Wish is individually painted by Ethel on hand made paper and beautifully framed in a contemporary black wooden frame. Special Commissions are always welcome and are surprisingly affordable. Ogham Art can be used to mark nearly any occasion. Custom marriage plaques consisting of both names together in one frame are extremely popular wedding gifts. A child's name painted in Ogham makes a thoughtful and unique gift for a newborn baby.

At The ClayPipe Visitor Centre, Knockcroghery, Ethel has revived the craft of pipe making using the original moulds and tools handed down from generations of pipe making. Each pipe is hand-made using the same skills employed by artisans centuries ago. Traditional craftsmanship renders each pipe a unique, authentic Irish craft-piece.



Bog Buddies™ are fun characters handcrafted in Ireland from real Irish bog. The first Bog Buddies were born in 2009 and are sold in shops throughout Ireland and beyond and through our online store.





Rita Oates Artist

Rita's art journey began in Kansas City, USA. She was born there, the daughter of Irish immigrants. Her childhood was a rollercoaster ride between the contrasting worlds of a bustling, diverse American city and the quiet solitude of a rural isolated farm on a mountainside in the West of Ireland. In her busy modern world, there is a growing emphasis on the importance of mindfulness and optimism. Uplifting artwork can have a positive influence on our wellbeing. Her artwork is intended to be thought-provoking and to inspire hope and positivity in the viewer.

What about Roscommon inspires your work?

Much of her work is inspired by nature; whether it's a lunar eclipse, a star-filled sky, a field or birds on a fence. She finds beauty in simple everyday images and combine these image with uplifting verse.

Rita Oates Artist was established in 2017, initially selling the cards and prints in her retail outlet ETL Craft and Giftware in Roscommon town. Three years later, the products are now being sold nationwide. She launched her website www.ritaoatesartist.ie with a view to increasing sales and progressing the long-term objective to transform the business into a nationally and internationally recognised brand.

We would love to hear from you...



Main Street, Roscommon Town, Co. Roscommon, F42 Y889



+353 (0)87 967 8432



info@ritaoatesartist.ie



www.ritaoatesartist.ie



www.facebook.com/ritaoatesartist

www.facebook.com/etlroscommon



www.instagram.com/ritaoates_artist

www.instagram.com/etl_roscommon



Ros Clay Pottery Studio

Ros Clay Pottery Studio is an inspiring studio in Roscommon Town where you can create and design your very own pottery masterpiece with clay, paints, stencils, and cutters. When you have finished, the product will be glazed and fired in the kiln. Creative experiences are enjoyed for children's parties, corporate team building, club nights and are also perfect for therapeutic purposes.

Facilities are fully inclusive to all types of people with physical disabilities and Ros Clay Pottery Studio is also very involved in the local community.

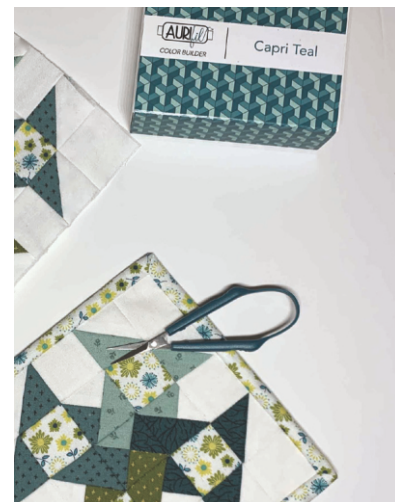
Painting pottery is a very relaxing, therapeutic activity, which helps to relieve stress, anxiety and depression. Not only can it be done in studio, but can also be offered as a "take away" kit for everyone to enjoy in the comfort and safety of their own home, centre or school. Gift vouchers are also available.

We would love to hear from you...

-  Main Street, Roscommon, F42 YR22
-  +353 (0)87 977 5517
-  info@rosclaypottery.com
-  www.rosclaypottery.com
-  www.facebook.com/Rosclaypottery
-  www.instagram.com/Rosclaypottery

Seams Sew Simple

Lynn Naughton designs kits for her quilt shop. These include quilt kits, wall hangings, and bags. The kits are usually designed around the fabric. Lynn finds inspiration in the seasons, including wild life and flora. Her business has an online shop where visitors can watch tutorials, find inspiration and purchase the kits as well as the materials to make their own projects. Lynn also runs creative workshops at her studio.



We would love to hear from you...

-  Correal, Athleague, Co. Roscommon
-  +353 (0)87 918 5054
-  lynn@seamsewsimple.ie
-  www.seamsewsimple.ie
-  www.facebook.com/Quilts.Patchwork
-  www.instagram.com/seamsewsimple



Smyth Knives



Paddy Smyth, owner of Smyth Handmade Knives, worked for a number of years as a chef and a trained butcher. Having a keen interest in hunting, fishing and camping, he has used knives for most of his life. With this true understanding, Paddy has honed his skills as a knife maker through sheer interest and passion for the art. Each knife is uniquely crafted with meticulous attention to detail, with the end user always in mind. Paddy can customise a piece to suit your needs, using your preferred materials to create the final bespoke piece. Smyth Knives is a member of the Design and Crafts Council of Ireland and one of only a handful of knife makers in Ireland.

What about Roscommon inspires your work?

Natural history of the county, including locally available materials, to use in products and the historical abundance of inspiration like Roscommon castle and the Rathcroghan site.

We would love to hear from you...

-  Racecourse Rd., Co. Roscommon
-  +353 (0)87 628 1252
-  smythknives@gmail.com
-  www.smythknives.com
-  www.facebook.com/smythknives
-  www.instagram.com/Smyth_knives06



Steeple View Crafts



The level of detail in Kay Condon's figurines and characters is certain to bring joy and a smile. Sheep characters, initially made for children, are bought as unique stress busters by adults, the donkey in the Nativity set is carrying real Roscommon turf in his baskets, while the photo of the bog cotton includes a real piece of bog cotton, picked and dried on their own bog.

What about Roscommon inspires your work?

In 2021 Kay undertook hand knitting a blanket to reflect daily temperature & weather conditions throughout the year. The result was a vibrantly coloured blanket. The personal benefits from such an undertaking on any knitting project, big or small, is it helps with mindfulness, reduces stress and boosts self confidence. You can learn to knit with Kay and appreciate for yourself the benefits of combining vibrant colours in a relaxed environment.

We would love to hear from you...

-  Ballinleg, Fuerty, Co Roscommon
-  +353 (0)87 906 7553
-  kaycondon@gmail.com



Úna Burke



Úna Burke leather accessories are timeless, elegant, considered and sculptural. They are designed for the discerning customer who appreciates quality and creativity. All styles are crafted entirely by hand in the Úna Burke Atelier in the West of Ireland and are made using only the best Vegetable Tanned Cowhides and hardware sourced from the UK and Italy. Úna Burke's ethical practices and production processes resulted in her being one of the first brands to be awarded the 'Positive Luxury Butterfly Trust Mark' back in 2012. With such an avant garde design style, it's little wonder that the brand has developed a strong celebrity following. High profile clients include Lady Gaga, Rihanna, Madonna, to mention a few. Aside from seasonal collections, Knockvicar native Úna has produced costumes for film and stage including a jacket and bodice for Michelle Yeoh in Star Trek Discovery. Úna has also collaborated with car brands Lexus and Rolls Royce, cosmetic companies Nars and L'Oreal, and glassware brand Irish Handmade Glass Company.

We would love to hear from you...

- 📞 +353 (0)87 195 6694
- ✉ emmett@unaburke.com
- 🌐 www.unaburke.com
- 📷 www.instagram.com/unaburke_design

ROSCOMMON

VISUAL ARTISTS



Anne Rigney Art

Anne Rigney is a mixed-media visual artist. She works in oils, acrylics and watercolours. Her works are inspired by the ever-changing colours of nature, and her personal response to the ephemeral nature of life. Anne has had numerous solo exhibitions throughout Ireland. She has also exhibited her work in Scotland, Germany, Poland and the U.S. Her work is in many private and public collections.

"In the abstract Anne Rigney creates striking and provoking work"
Ian Wiezorek. The Irish Times



Scregg, Knockcroghery, Co. Roscommon, F42 VY38



+353 (0)86 888 9350



anne.rigney@gmail.com



www.annerigney.com



www.facebook.com/AnneRigneyArt



www.instagram.com/annergigney

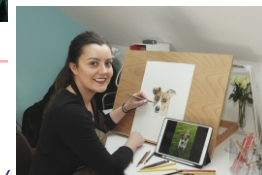
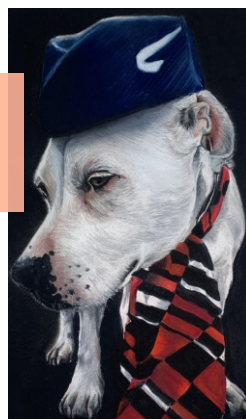


Ellen Susan Igoe Art

Ellen Susan Igoe uses a wide variety of mediums as a multidisciplinary artist. She works with pencils, soft pastels, oil pastels, acrylics, oils, watercolour, 3D, sculpture, mixed media and photography to name a few. Oftentimes she will mix one or more of these into her work to create the finished piece.



Her commissioned portraits of humans and pets, landscape paintings and drawings of machinery and buildings are photo-realistic works that take much time and skill to create. Susan also releases several new paintings and high quality fine art Gicleé prints each year.



<https://ellensusanigoeart.com/>



ellensusanigoeart@gmail.com



<https://m.facebook.com/ellensusanigoeart/>



<https://instagram.com/ellensusanigoeart?igshid=YmMyMTA2M2Y=>



<https://twitter.com/esigoeart?s=21&t=rcUJgT9-k2rGuglbJHmwkA>

Kofi: <https://ko-fi.com/ellensusanigoeart>



Graeme Singleton

Graeme mainly paints in oils and acrylics whilst also working in coloured pencils and pastels. His inspiration comes from nature and he particularly loves to paint birds, wildlife and landscapes. Graeme is often referred to as realism artist in that he tries to capture the essence of the subject.



Robin Hood Cottage, Oran, Donamon,
Co. Roscommon, F42 A264



+353 (0)89 266 2134



graemesingleton@hotmail.com



www.facebook.com/arty.graeme.9



www.instagram.com/artygraeme



Joe Caslin

Joe Caslin is an internationally recognised Irish street artist and activist. He is best known for his beautifully rendered pencil drawings, which manifest as towering pieces of street art. His highly accessible work engages directly with the social issues of modern Ireland, on an unavoidable scale.

The monochrome drawings Caslin creates live with us and against many of us for some time before washing away. They hold a mirror up to the kind of society that we are, whilst asking us individually what kind of society we want to be a part of.



2 Eagle Court, Ardnanagh, Roscommon. F42 Y820



+ 353 (0) 86 331 6339



joe@joecaslin.com



www.joecaslin.com



www.instagram.com/joecaslin

Kate Oram

Kate is an artist, sculptor and designer working in a range of media including bronze, clay, natural found materials, and stone. She has a large back catalogue of sculptural corporate award pieces, as well as ongoing/annual awards commissions.

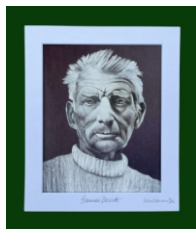
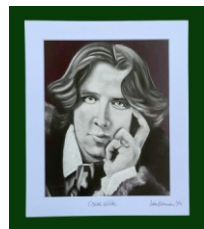
📍 Knockavroe, Boyle, Co. Roscommon, F52 YR83
 📞 +353 (0)86 162 8091
 ✉ info@kateoram.com
 🌐 www.kateoram.com
 📘 www.facebook.com/kateoramdesignermaker
 📷 www.instagram.com/kateoram



Lorna Brennan



Lorna's art practice is visual incorporating drawing, painting and installation. Inspired by everything around her, Lorna has a great love of nature, people, beauty and she is eternally drawn to the sky as an infinite source of inspiration. Her work is available for sale at Time Pieces, Roscommon Town.



📍 Time Pieces, Main Street, Roscommon
 📞 +353 (0)90 662 5408
 ✉ Misslornab@gmail.com
 🌐 www.timepieces.ie
 📘 www.facebook.com/TimePiecesIreland
 📷 www.instagram.com/Timepiecesroscommonireland

Malachy Costello

Malachy Costello is a visual artist who paints the landscape of the North West. He is a graduate of the Crawford College of Art, Cork. A regular participant in the annual RHA and RUA exhibitions, he has long been associated with the Boyle Arts Festival where he has held solo shows for the past 15 years.

His paintings are in numerous public and private collections in Ireland and abroad.

Sales outlets:

The Trinity Gallery

19 Clare St. Dublin, DO2 PX28 (01) 662 9542

The Lysaght Gallery

23 Main St., Howth, Dublin, D13 H2A8 (01) 832 3327

The Purple Onion Gallery

Tarmonbarry, Co. Roscommon, (043) 335 9919



Drumlion, Carrick-on-Shannon, Co. Roscommon, N41 V300



087 6400441



malachycostello@hotmail.com



www.malachycostello.com

Matthew Gammon



Matthew Gammon is a full-time lens-based artist who splits his time between Boyle, Co. Roscommon and Strandhill, Co. Sligo.

Gammon specialises in creating photogravure prints focused on the beauty to be found in our everyday surroundings. He is an Associate member of the Irish Photographic Federation and the Royal Photographic Society, and his work is represented in a number of national collections and prestigious group exhibitions, including shows by the Royal Hibernian Academy, the Royal Ulster Academy, the Royal Photographic Society and the Royal Society of Painter-Printmakers.



+353 (0)85 717 8125



matthewgammon.artist@gmail.com



<https://www.matthewgammon.com>



<https://www.instagram.com/matthewgammon.artist/>



<https://www.facebook.com/matthewgammonartist>

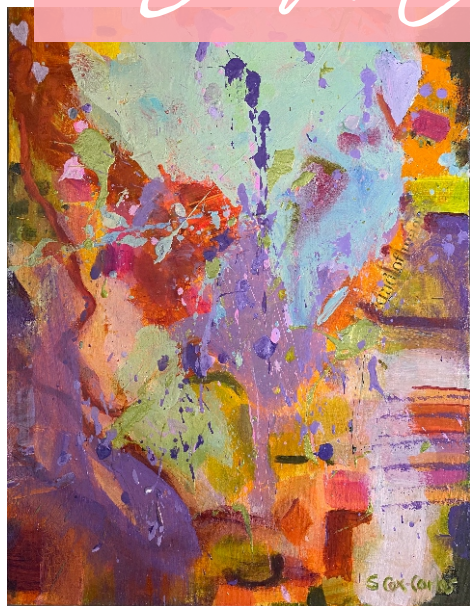
Norma Fitzgerald

Through vibrant wild colours and a variety of mediums, Norma is driven to capture the magic that surrounds her. Her work encapsulates the drama and everchanging moods of our spectacular Irish landscapes. Following her Degree from the National College of Art and Design, Norma is delighted to set up her long-desired studio in Roscommon.

📍 Cloonybeirne, Circular Road, Roscommon Town, F42 FR59
 📞 +353 (0)87 911 0572
 ✉️ Normafitzgerald@gmail.com
 🌐 www.normafitzgeraldart.com



Siobhan Cox-Carlos



Siobhan is a painter, known for her use of vibrant colour and love of texture and pattern. Cox-Carlos was awarded an honours degree from Limerick College of Art & Design. “My work is mainly influenced by my love of nature, in which I am immersed in my native Co. Roscommon. I find inspiration in the hedgerows, flowers and grasses growing wild in my surroundings and am equally appreciative of the beauty beyond my local landscape.”

“I intend the viewing of my art to be an uplifting experience. Above all I hope that the viewer will forget what is going on in the present turbulent times and experience even a moment's joy and happiness in the presence of one of my pieces”



📞 086 364 7367
 ✉️ <https://siobhancoxcarlos.com/>
 🌐 siobhancoxcarlos@gmail.com
 📷 <https://www.facebook.com/siobhancoxcarlosartanddesign>
 📺 https://www.instagram.com/siobhan_cox_carlos/



SIOBHÁN COX-CARLOS
ART & DESIGN



Susan Mannion

Susan is an enamelist and printmaker, her work embracing the traditions of copper enamelling and wood engraving. Based in Boyle, she is influenced by landscape and patterns in nature, enjoying experimenting with these mediums and creating completely handmade artwork. Susan's work has been exhibited nationally and internationally and she has been awarded several commissions.



+353 (0)85 121 4757



semannion@yahoo.com



www.susannannion.com

Vera Gaffney

Colour your world with Vera Gaffney's uplifting limited edition prints. Her bespoke pieces provide the ultimate statement for every room, from haunting moons to colour drenched blooms and spectacular bog landscapes. Framed editions start at €45 and Vera offers free shipping and returns to Ireland and UK.



Drum, Boyle, Co. Roscommon



+353 (0)87 792 7998



info@veragaffney.com



www.veragaffney.com



www.facebook.com/veragaffneyartist



www.instagram.com/vera_gaffney_art



Acknowledgements

Local Enterprise Office Roscommon would like to thank all Designers, Crafters and Artists for their cooperation and input in the creation of the Roscommon Design | Craft | Visual Art Sourcing Guide.

Front cover image: Courtesy of Úna Burke

Printers: Triest Press CLG



Oifig Fiontair Áitiúil

Local Enterprise Office Roscommon

Supporting small businesses in County Roscommon

Telephone: 09066 26263

Email: localenterprise@roscommoncoco.ie

Visit: www.localenterprise.ie/roscommon

Contact us to discuss supports & services for your business

Roscommon
Oifig Fiontair Áitiúil
Local Enterprise Office



Comhairle Contae
Ros Comáin
Roscommon
County Council



Ireland's European Structural and
Investment Funds Programmes
2014-2020
Co-funded by the Irish Government
and the European Union



European Union
European Regional
Development Fund